

HÄFNER – a standard for quality and precision

Weldingwire reels

to IEC ISO 544 (DIN 8559) and others



HÄFNER



Packaging:

Attention: If pallet packing is stated the reels are preferably packed on pallets with shrink wrapping. It should however be noted that the reels should not be stored in direct sunlight, because heat build up can lead to permanent deformation of the plastic material. Reels up to approx. 120 mm flange diameter are not suitable for pallet packing and will be supplied in cartons. The

HÄFNER – a standard for quality and precision

Weldingwire reels
to IEC ISO 544 (DIN 8559)
and others



HÄFNER

larger reels should be packed on pallets for ease of handling during transport. For long distances we recommend shipping on full lorry loads – approx. 20 pallets.

Weldingwire reels

When packed in cartons/on pallets*.

Type	No. off	Gross weight kg	Carton size (cm)	No. off	Gross weight kg	Pallets Overall dim. (cm)
SD 100/40 K	324	16,8	68 x 44 x 37	–	–	–
SD 100/60 K	330	21,0	52 x 52 x 45	–	–	–
SD 100/53,5	270	20,9	52 x 52 x 45	–	–	–
SD 117	250	35,2	75 x 48 x 49	–	–	–
SD 118	250	35,2	75 x 48 x 49	–	–	–
HD 135/16,5	390	41,3	66 x 54 x 67	–	–	–
HD 150/19,3-100	–	–	–	1232	186	82 x 128 x 180
SD 200 K	112	30,0	68 x 44 x 71	1050	280	80 x 120 x 185
SD 230	36	22,8	68 x 44 x 71	400	242	100 x 120 x 218
SD 300 K	56	40,0	82 x 76 x 77	400	275	110 x 132 x 225**
				360	249	110 x 132 x 205**
SD 300 K AW	56	38,5	82 x 76 x 77	360	232	110 x 132 x 205
SD 300 K, OS	56	41,9	82 x 76 x 77	400	287	110 x 132 x 225**
				360	260	110 x 132 x 205**
SD 300/20 K	56	45,0	82 x 76 x 77	400	306	103 x 127 x 225**
				360	277	103 x 127 x 205**
SD 350 K AW	–	–	–	240	220	120 x 110 x 220
SH 253 K	85	16,6	66 x 54 x 67	–	–	–
SH 370 K	40	20,3	82 x 76 x 77	180	90	100 x 120 x 173
SH 370/90 K	36	19,9	82 x 76 x 77	240	122	100 x 120 x 222**
				180	95	100 x 120 x 195**
SH 390 K	36	22,5	82 x 76 x 77	240	137	110 x 120 x 222**
				180	106	110 x 120 x 195**
SH 390/93,5	36	24,0	82 x 76 x 77	180	116	110 x 120 x 195
SH 460 K	20	40,4	89 x 62 x 99	85	172	100 x 120 x 195
Adaptor K 300	50	32,7	74 x 74 x 64	–	–	–
Adaptor with sliding locking bold			on request			

*Packaging is based on one-way-packaging. Multiple journey packaging on request. **loading height

Expert guidelines:

Are there any reels that meet hygiene requirements?

»Yes. Medical technology is not the only field with strict hygiene regulations for reels. Häfner, Europe's no. 1 for reels made of thermoplastic materials, is the perfect choice for all these quality requirements.

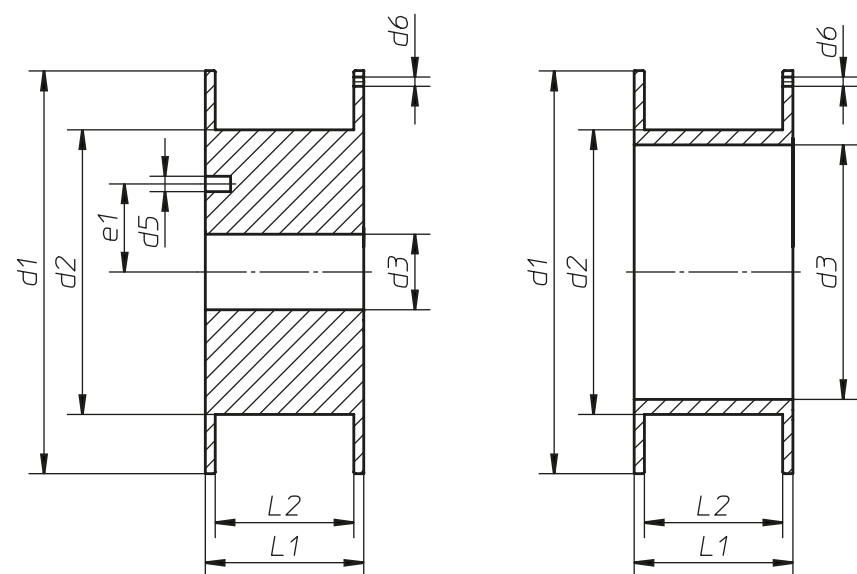
We now have our own cleanroom - which meets the standards of IEC ISO 14644-1 to c'GMP class D - and added germ- and particle-free products to our performance range. For further information please go to our website at www.medspools.de



Spools "Made by Häfner"

The expertise of more than 75 years' experience:
»The industry-wide developments and environmentally friendly production of reels along with intensive dialogue with our customers have made us the no. 1 in Europe. We guarantee excellent quality and service, together with a good price-performance ratio.
Let's talk about common aims together – we have the solutions for your requirements.

Häfner & Krullmann GmbH
Plastic Processors
Krentrufer Straße 7-15
33818 Leopoldshöhe (Germany)
Tel. +49 (0)5208 7004-0
Fax +49 (0)5208 7004-155
info@hafner-spools.com
www.hafner-spools.com


Materials:

The reels are manufactured as standard from high impact polystyrene in the colour anthracite. Further colours are available on request, e. g. white, red, green, blue and others. For special application the reels can be supplied in other materials, e. g. ABS or SAN. Further information is given in our material specification. Please enquire for further details.

Special requests:

If specifically required, additional holes can be provided. Please enquire for further details. The reels SD 300 K, OS can also be supplied with additional label area.

Tolerance:

All measures, weights and loads as indicated in this brochure are approximate figures. Tolerances and deviations as customary in this trade reserved.


Weldingwire reels to IEC ISO 544 (DIN 8559) and others

Dimensions in mm. All dimensions are nominal dimensions.

Illustration No.	Type	d1	d2	d3	d5	e1	d6	L1	L2	Winding vol. cm ³	Weight for steel/iron wire approx.	Possible materials	Remarks
01	SD 100/40 K	100	38	16,5	–	–	2,8	45	38,5	258	1,5 kg = 3,3 lbs	PS	
02	SD 100/60 K	100	57	16,5	–	–	2,8	45	38,5	204	0,8 kg = 1,8 lbs	PS	
03	SD 100/53,5	100	53,5	41,4	47,8	–	–	54	46	257	1,6 kg = 3,5 lbs	ABS, PS	tapered bore
04	SD 117	117	54	48,0	–	–	2,0	71	57,5	491	2,2 kg = 4,8 lbs	PS	
05	SD 118	117	54	48,0	–	–	2,0	71	57,8	491	2,2 kg = 4,8 lbs	PS	
06	HD 135/16,5	135	57	16,5	–	–	–	49	43	505	–	PS	
not illustrated	HD 150/19,3-100	149,5	55	19,3	9	19	3,0	100	94	1427	–	PS	
07	SD 200 K	200	105	50,5	–	–	–	55	45	1024	5 kg = 11 lbs	ABS, PS	
08	SD 230	230	208	55,35	–	–	1,6	102	95	718	–	SAN	d3 also with Ø 15,9
09	SD 300 K AW	300	212	51,5	11	44,5	3,0	103	89,9	3200	15 kg = 33 lbs	ABS, PS	L2 also 90,4 mm/AW = automatic winding
10	SD 300 K	300	212	51,5	10	44,5	2,8	103	91	3220	15 kg = 33 lbs	ABS, PS	
11	SD 300 K, OS	300	212	51,5	13	44,5	3,0	103	91	3220	15 kg = 33 lbs	ABS, PS	The reels are produced with a number of moulds, which leads to slight variations in the winding width. For layerwinding, especially with fine wires, it is recommended to use reels from one mould only for a specific winding machine.
12	SD 300/20 K	300	180	51,5	10	44,5	2,8	103	85	3845	20 kg = 44 lbs	ABS, PS	
not illustrated	SD 350 K AW	350	212,5	51,7	11	44,5	3,0	103	89,4	5430	30 kg = 66 lbs	ABS	
13	SH 253 K	253,5	221	215	–	–	1,9	37	30	363	1,8 kg = 3,9 lbs	SAN	
14	SH 370 K	370	311	305	–	–	4,0	80	70	2209	12 kg = 26 lbs	ABS, PS	
15	SH 370/90 K	370	310	305	–	–	3,8	88	80	2564	14 kg = 30 lbs	ABS, PS	
16	SH 390 K	390	310	305	–	–	3,8	89	79	3475	18 kg = 40 lbs	ABS, PS	
17	SH 390/93,5	396	310	305	–	–	–	93,5	80	3815	19 kg = 42 lbs	ABS, PS	The reel has a protruding collar on the flange, therefore easy stacking.
18	SH 460 K	460	319	305	–	–	3,0	105	91	7850	50 kg = 110 lbs	ABS, PS	
19	Adaptor K 300	277	185	50,5	–	–	–	102	–	–	–	ABS	Adaptor for use in connection with basket reel.
20	Adaptor with sliding locking bold	190	178,5	51,5	11	44,5	–	107	–	–	–	ABS	Adaptor for use in connection with basket reel.
A	SD-Clip	Device to secure the winding goods of all SD 300 spool types.											