

## Fine Wire Reels



HÄFNER



## Packaging:

**Attention:** If pallet packing is stated the reels are preferably packed on pallets with shrink wrapping. It should however be noted that the reels should not be stored in direct sunlight, because heat build up can lead to permanent deformation of the plastic material.

## Fine Wire Reels



HÄFNER

## Fine Wire Reels

When packed in cartons/on pallets\*.

\*Packaging is based on one-way-packaging. Multiple journey packaging on request.

Type	No. off	Gross weight kg	Carton size (cm)	No. off	Gross weight kg	Pallets Overall dim. (cm)
MF 40	650	15,5	52 x 52 x 45	–	–	–
HKL 40	650	14,2	52 x 52 x 45	–	–	–
MF 50	500	16,4	65 x 54 x 35	–	–	–
GD 50	420	9,5	34 x 34 x 23	–	–	–
HK 76/16-60	350	19,8	68 x 44 x 37	–	–	–
HKK 76	350	18,0	68 x 44 x 37	–	–	–
HK 76	300	22,7	65 x 54 x 35	–	–	–
HK 76/45	300	22,4	65 x 54 x 35	–	–	–
S 74/11-93 (S221)	420	37,7	68 x 44 x 71	–	–	–
P-5G	300	27,0	65 x 54 x 35	–	–	–
S 80/11-100 (S225)	405	42,5	68 x 44 x 71	–	–	–
HK 80/45	180	14,9	65 x 54 x 35	–	–	–
HK 80 S	180	15,8	65 x 54 x 35	–	–	–
HKV 100	280	38,5	77 x 52 x 53	–	–	–
HK 100/59-160	60	22,4	52 x 52 x 45	–	–	–
D 100/64,5-150	63	20,5	70 x 49 x 33	–	–	–
HKV 125	144	25,2	77 x 52 x 53	1080	183	80 x 120 x 168
HKL 125	90	28,4	66 x 54 x 67	432	135	100 x 120 x 113
HK 130/82-176	27	17,6	54 x 40 x 41	–	–	–
HKV 160	80	27,5	66 x 54 x 67	490	165	80 x 120 x 177
HKV 200	36	23,0	66 x 54 x 67	320	194	80 x 120 x 177
HKL 200/22	18	18,3	77 x 52 x 53	120	118	80 x 120 x 170
HKL 200/100	18	19,3	77 x 52 x 53	120	125	80 x 120 x 170
HKV 250	16	18,0	77 x 52 x 53	140	147	80 x 120 x 192

## Expert guidelines:

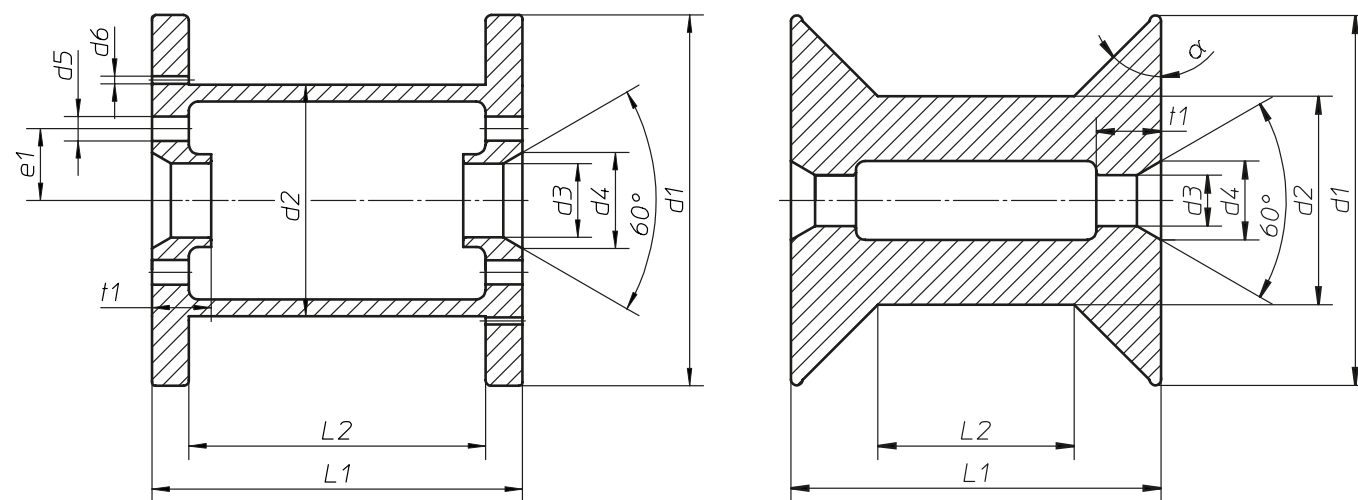
**Does Häfner use tested raw materials?**  
 »Consistent checks of incoming goods are a matter of course at Häfner. All incoming materials are checked by our experienced team

before they are used. Perfect raw materials are the basic requirement for uninterrupted and on-time production. Both are top priority at Häfner.«

## Spools "Made by Häfner"

**The expertise of more than 75 years' experience:**  
 »The industry-wide developments and environmentally friendly production of reels along with intensive dialogue with our customers have made us the no. 1 in Europe. We guarantee excellent quality and service, together with a good price-performance ratio.  
 Let's talk about common aims together – we have the solutions for your requirements.«

Häfner & Krullmann GmbH  
 Plastic Processors  
 Krentruper Straße 7-15  
 33818 Leopoldshöhe (Germany)  
 Tel. +49 (0)5208 7004-0  
 Fax +49 (0)5208 7004-155  
 info@hafner-spools.com  
 www.hafner-spools.com



HÄFNER – a standard for quality and precision

## Fine Wire Reels

**Material:**

The materials available are shown in the table:

**PS** = high impact polystyrene**ABS** = Acrylonitrile Butadiene Styrene

Further information is given in our material specification.

**Tolerance:**

All measures, weights and loads as indicated in this brochure are approximate figures.

Tolerances and deviations as customary in this trade reserved.



▣ **Fine Wire Reels**

All dimensions are nominal dimensions in mm.

Illustration No.	Type	d1	d2	d3	d4	L1	L2	$\alpha$	Winding vol. cm <sup>3</sup>	Possible materials	Remarks
01	MF 40	40	25	8	11,5	90	70	–	54	PS, ABS	–
02	HKL 40	40	25	8	11,5	90	70	45°	58	ABS	–
03	MF 50	50	31,5	8	11,5	90	70	–	83	PS, ABS	–
04	GD 50	50,3	30	10	–	25,5	19,5	–	25	ABS	–
05	HK 76/16-60	63	43,6	16	–	60	51,2	–	83	PS	Container VD 63
06	HKK 76	63	43,5	16	–	60	34	45°	72	PS	also with label area, Container VD 63
07	HK 76	63,4	44	16	–	86,3	76	–	121	PS, ABS	Container VD 80 with base insert can be used, also with label area
08	HK 76/45	63,5	44	16	–	86	60	45°	113	PS, ABS	Container VD 80 with base insert can be used, d3 also conical, also with label area
09	S 74/11-93 (S221)	74	62	11	15	93	79	–	101	PS, ABS	–
10	P-5G	80	40	15	–	82	70	–	264	PS	–
11	S 80/11-100 (S225)	80	58	11	15	100	84	–	201	PS, ABS	–
12	HK 80/45	80	55	16	19	100	70	45°	220	PS, ABS	d3, also with 8 and 11 Ø possible, Container VD 100 with base insert can be used
13	HK 80 S	80	55	16	19	100	69,5	45°	220	PS, ABS	d3, also with 8 and 11 Ø possible, Container VD 100 with base insert can be used
14	HKV 100	100	56	16	19	100	49	45°	390	ABS	Container VD 100
15	HK 100/59-160	100	75	59	70	160	91	20,75°	429	ABS	–
16	D 100/64,5-150	100	80	64,5	74	150	135	–	381	ABS	–
17	HKV 125	125	71	16	24	125	65	45°	767	ABS	Container VD 125
18	HKL 125	125	71	22	34	200	140	45°	1407	ABS	–
19	HK 130/82-176	130	100	82	93,4	176	92	20,75°	743	ABS	–
20	HKV 160	160	90	22	34	160	85	45°	1675	ABS	d3 also with 16 mm Ø, Container VD 160
21	HKV 200	200	112	22	34	200	106	45°	3271	ABS	d3 also with 16 mm Ø, *with carrier handle 600 g
22	HKL 200/22	200	112	22	34	315	221	45°	5790	ABS	d3 also with 16 mm, *with carrier handle 925 g, VBL 200/22 see leaflet no.19
23	HKL 200/100	200	112	100	106	315	221	45°	5790	ABS	*with carrier handle 1000 g, VBL 200/100, see leaflet no. 19
24	HKV 250	250	140	22	34	250	133	45°	6469	ABS	d3 also with 16 mm Ø, *with carrier handle 1000 g, VB 250/250 see leaflet no. 19